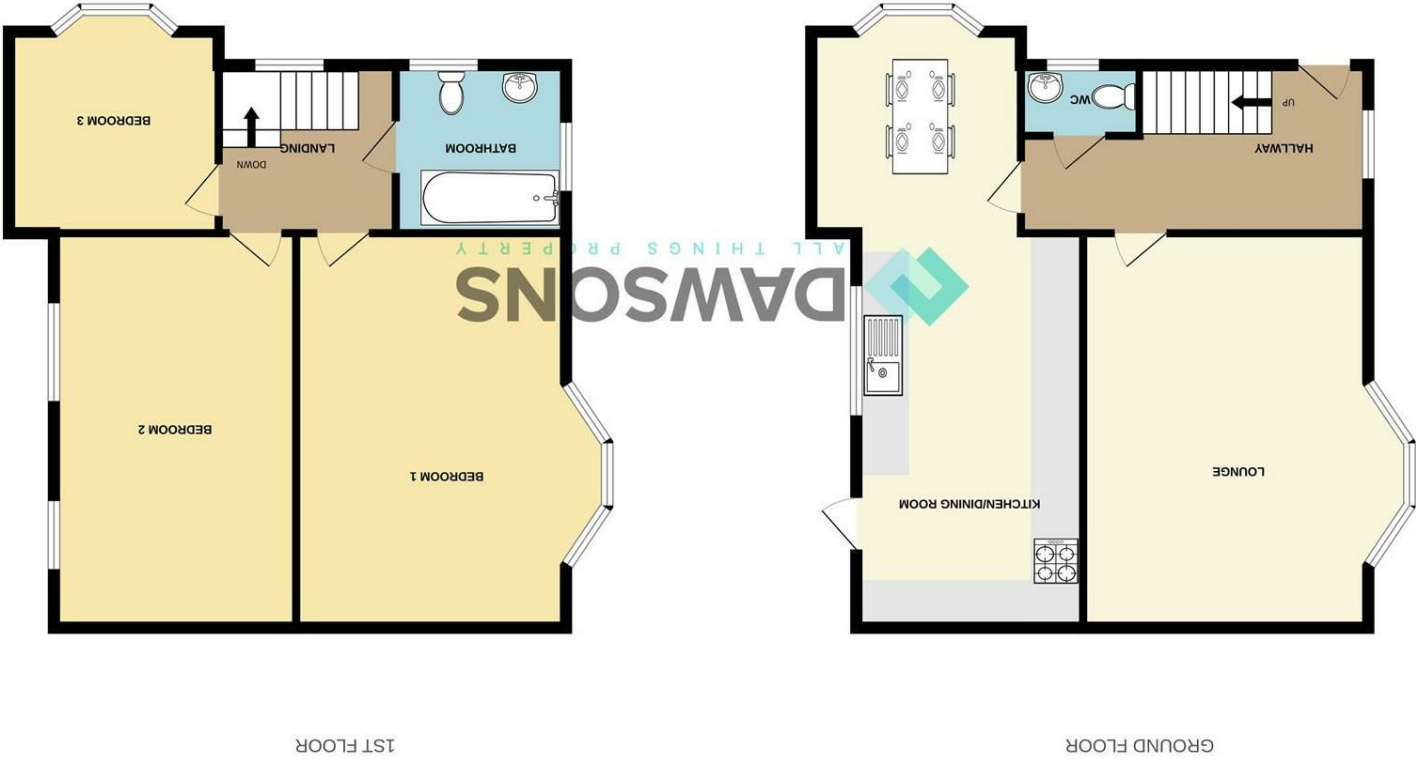
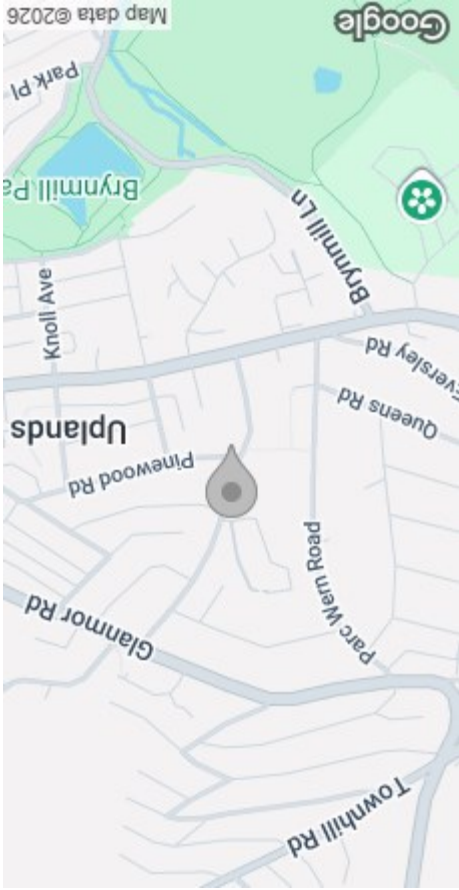


These particulars, whilst believed to be accurate are set out as a general outline only for guidance and do not constitute any part of an offer or contract. Intending purchasers should not rely on them as statements or representations of fact, but must satisfy themselves by inspection or otherwise as to their accuracy. No person in this firm's employment has the authority to make or give any representation or warranty in respect of the property.

Whilst every attempt has been made to ensure the accuracy of the floorplan contained here, measurements of doors, windows, rooms and any other items are approximate and no responsibility is taken for any error, omission or mis-statement. This plan is for illustrative purposes only and should be used as such by any prospective purchaser. The services, systems and appliances shown have not been tested and no guarantee as to their operability or efficiency can be given.
Made with Metropix ©2025

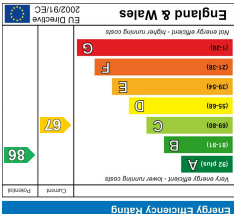


FLOOR PLAN



AREA MAP

EPC



GENERAL INFORMATION

A beautifully presented traditional semi-detached home, perfectly positioned to enjoy views across Swansea Bay and towards Mumbles Head from the rear.

Set in a sought-after location with the rare benefit of driveway parking and an EV charging point, this charming home seamlessly blends period character with modern comfort.

Arranged over two floors, the property is entered via a side doorway leading into a welcoming hallway, enhanced by a picturesque stained glass window. The ground floor offers a stylish cloakroom, a bright front-facing lounge, and a rear open-plan kitchen/dining room fitted with ample storage and worktop space.

The first-floor landing leads to three generously sized bedrooms, with the master bedroom benefiting from fitted double wardrobes, along with a smartly designed family bathroom. From the landing, a pull-down ladder provides access to a fully boarded attic, complete with Velux window framing superb sea views.

Additional features include uPVC double glazing and gas central heating throughout. Externally, the property enjoys an easy-to-maintain garden.

This property is situated in the popular area of Sketty which is in close proximity to local amenities, good catchment for local schools, good links to local colleges and university. within walking distance to popular parks and cafes.

Viewing is advised to appreciate what the accommodation has to offer.

FULL DESCRIPTION

GROUND FLOOR

ENTRANCE HALL

CLOAKROOM

LOUNGE

15'10" x 10'10" max (4.85 x 3.32 max)

KITCHEN/DINING ROOM

28'6" max x 11'2" max (8.69 max x 3.41 max)

FIRST FLOOR

LANDING

BEDROOM 1

13'1" x 13'11" (4.01 x 4.25)



BEDROOM 2

15'10" x 11'6" (4.85 x 3.51)

BEDROOM 3

12'4" x 10'2" (3.76 x 3.11)

BATHROOM

ATTIC SPACE

Hatch in landing will pull down steps, fully boarded with velux window with sea view.

EXTERNAL

front and side laid to lawn garden and a patio courtyard to rear.

PARKING

Driveway parking to side with EV charging point.

TENURE

Freehold

EPC

D

COUNCIL TAX

F

SERVICES

Mains gas, electric, water (billed) & drainage.

There is currently broadband available at the property via Virgin media, Fibre optic. Please refer to the Ofcom checker for further coverage information.

There are no known issues with mobile coverage using the vendors current supplier EE. Please refer to Ofcom checker for further information.

